

WinFrog Device Group:	PLOW
Device Name/Model:	SMD Plow (Zeus)
Device Manufacturer:	Soil Machine Dynamics Wincomblee Road Newcastle upon Tyne, UK NE63QS Tel: + 44 191 234 2222 Fax: + 44 191 234 0444 Email: smd@smd-uk.com
Device Data String(s) Output to WinFrog:	See Telegram Specification section below
WinFrog Data String(s) Output to Device:	NONE
WinFrog Data Item(s) and their RAW record:	PLOWDATA 490 ROV REF VEH NONE

DEVICE DESCRIPTION:

This driver is designed to positioning the plow relative to the ship and to read plow related data from the SMD Plow on the Cable Ship Zeus.

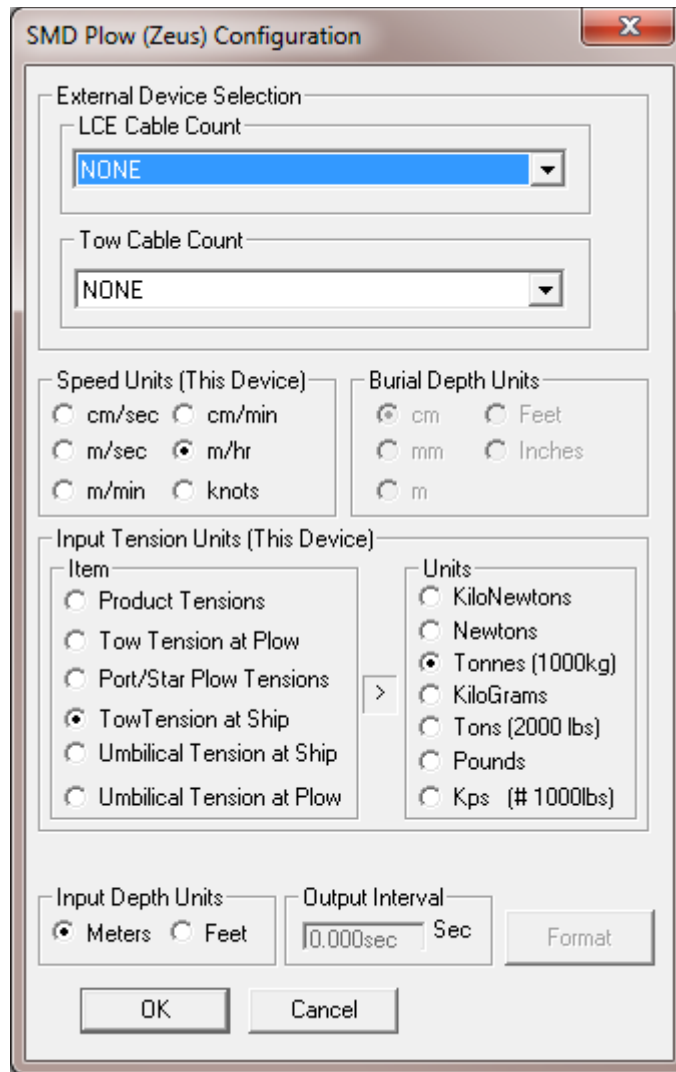
DEVICE CONFIGURATION INSTRUCTIONS

WINFROG I/O DEVICES > EDIT I/O:

Serial
Configurable Parameters

WINFROG I/O DEVICES > CONFIGURE DEVICE:

This device must be configured at the I/O Device window level. In the I/O Devices window, click the device name to select it, then right-click and select Configure Device. The SMD Plow (Zeus) Configuration dialog box appears, as seen below.



Select the data source for the LCE telephone cable count data and the Tow cable count data from the dropdown lists. Also select the appropriate Input Speed Units as well as the Input Tension Items and their associated Units. Specify whether the Input Depth Units are to be meters or feet.

WINFROG VEHICLE > CONFIGURE VEHICLE DEVICES > DEVICE DATA ITEM > EDIT:

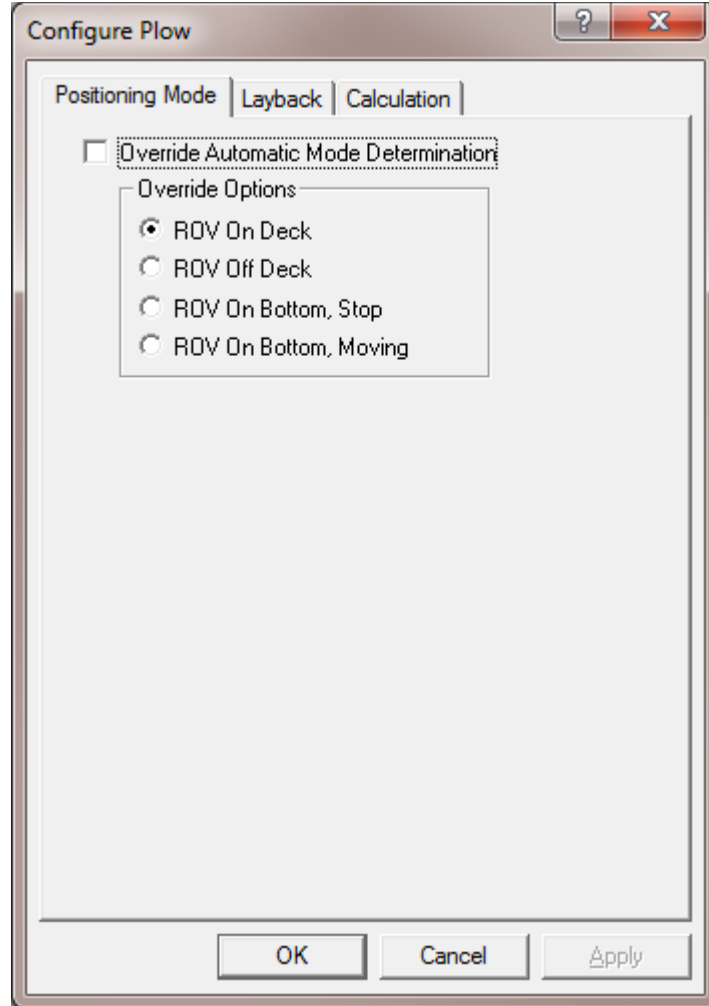
Adding the SMD Plow (Zeus) device creates two data items: PLOWDATA and ROV REF VEH. Once the data items have been added to the vehicle, they must be edited to suit the application.

Data item: ROV, SMD Plow (Zeus), PLOWDATA

This data item is used to read plow related data and to provide a reference point on the plow for positioning the plow relative to the ship. It is typically added to the plow vehicle in WinFrog.

Highlight this data item in the vehicle's device list and click the Edit button to open the Configure Plow dialog box as seen below.

Positioning Mode tab



Override Automatic Mode Determination:

This checkbox determines whether WinFrog automatically determines the towed vehicle location and mode or whether the operator determines it.

When in automatic mode, WinFrog uses the following criteria to determine the mode of the towed vehicle:

ROV On Bottom, Moving is assumed if the speed is greater than .2 knots or the Use ROV Speed setting is off and the layback is calculated at more than 1 meter.

ROV Off deck is assumed if the speed is greater than .2 and the layback is calculated at less than 1 meter and the altitude is greater than 4 meters.

ROV On deck is assumed if the speed is 0 and the layback calculated is less than the sum of the depth offset entered on the Calculations tab and the Tow point above water entered on the ROV REF VEH dialog.

ROV On Bottom, Stopped is assumed if none of the others are true.

Override Options:

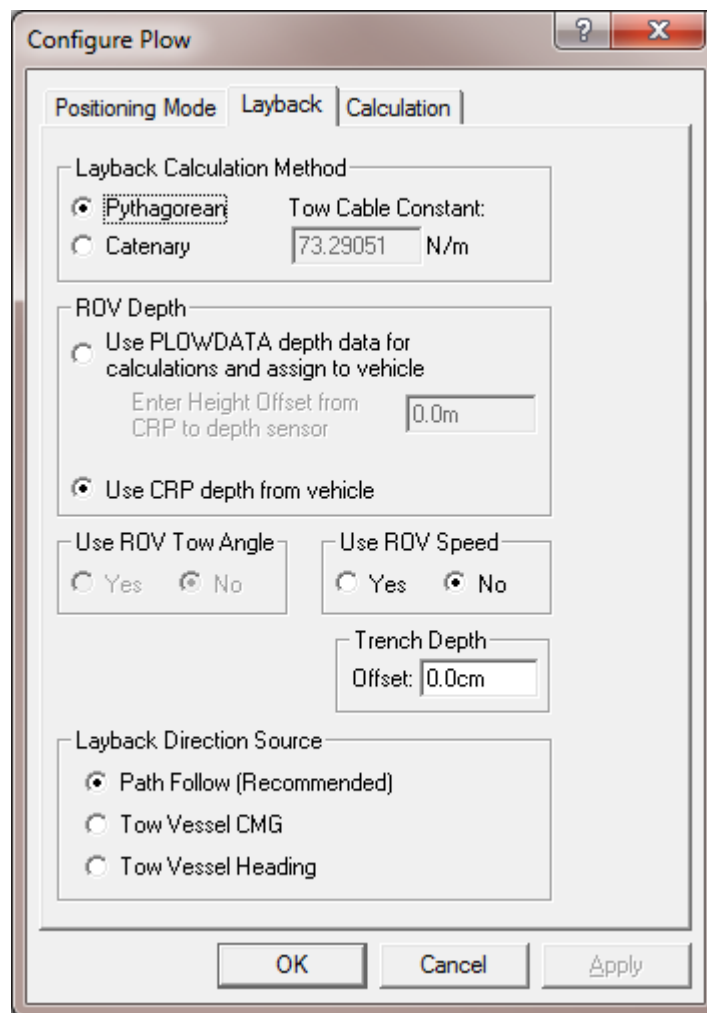
ROV On deck places the towed vehicle on the tow vessel 5 meters forward of the offset point entered in the ROV REF VEH dialog.

ROV Off deck places the towed vehicle on the tow vessel at the tow point, which is the offset point entered in the ROV REF VEH dialog.

ROV On Bottom, Stop leaves the vehicle where it was when this option was selected and makes no further calculations as to its position.

ROV On Bottom, Moving calculates the towed vehicle's position using the data available and updates all displays with this data.

Layback tab



Layback Calculation Method

Pythagorean uses the depth and cable count to form a right triangle. The layback is then calculated and applied to the tow vehicle's offset position along with an azimuth based upon the previous towed vehicle's raw position. WinFrog will use this position

to calculate an azimuth but use the calculated layback for the distance between the towed vehicle and the tow vehicle.

The right triangle is formed thus: the hypotenuse is the cable count and the vertical value is the sum of the depth, Tow Point Above Water and the z offset found on the Calculations tab.

Catenary requires the weight of the cable in newtons/meter, (1lbs/ft = 14.63nt/m). This calculation uses the cable count, depth of the towed vehicle and the tow tension to calculate the layback using a static catenary model. The azimuth used is the same as described above.

Use ROV Depth

Use PLOWDATA depth for calculations and assign to vehicle causes two actions:

- 1) The depth obtained from this device will be added to the depth offset and assigned to this vehicle. The depth offset is entered in the Calculation tab.
- 2) The value used to calculate the layback is the above value plus the depth offset entered on the Calculations tab plus the value *Tow Point above the Water*, entered in the ROV REF VEH configuration dialog (attached to the tow vehicle).

Use CRP depth from Vehicle causes the depth for the layback calculation to be obtained from the vehicle. Essentially, this means the depth must be obtained by another device and assigned to the vehicle by that device.

Use ROV Speed

Yes causes the speed of the device to be obtained from this device. This requires that the towed vehicle in use must have the ability to output a speed in its data string. If it does not, then select No. **No** causes the speed to be calculated from the positional information and time. It will be assigned to the vehicle.

Use ROV Tow Angle

This option only applies to the SeaPlowVIII Device.

Trench Depth

Offset – If the Trench depth checkbox is selected on the Calculation tab (see below) then this value, 0.0 or otherwise, will be assigned as this vehicle's trench depth.

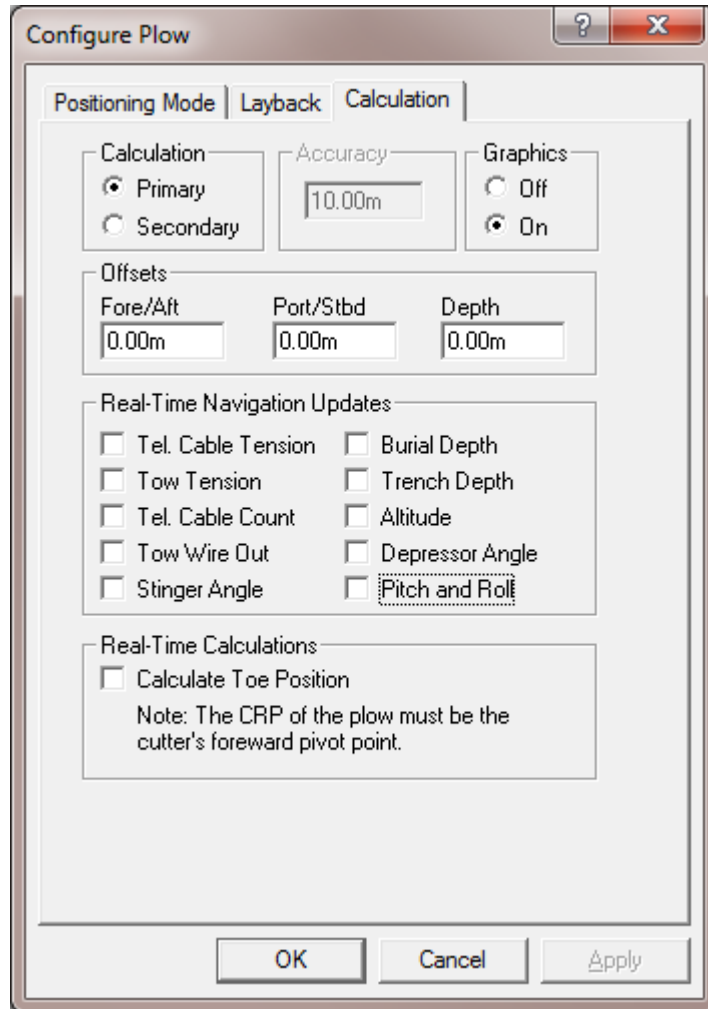
Layback Direction Source

Path Follow (Recommended) This is the recommended selection. It uses its own previous position and the tow vehicle location to determine the direction to the new position.

Tow Vessel CMG This selection uses the tow vehicle's course made good (plus 180 degrees) to determine the direction to the new position. As the course made good changes the towed vehicle will swing back and forth.

Tow Vessel Heading This selection uses the tow vehicle's heading (plus 180 degrees) to determine the direction to the new position. As the vessel's heading changes the towed vehicle will swing back and forth. This is usually more pronounced than the Tow Vessel CMG selection.

Calculation tab



Calculation

Primary – when selected, the layback described above will be used to calculate this vehicle's position, which will be assigned to it.

Secondary – when selected, this device will not determine this vehicle's position.

Accuracy

The Kalman filter uses this value as a weight factor. It should be set to a reasonable value.

Graphics

Select the On radio button to display a square in the Graphics and Bird's Eye windows at the offset position below.

Offsets

The **Fore/Aft** and **Port/Stbd** offset point is the reference point for the layback distance. Essentially, the lay back distance is the distance between this point and the offset point of the tow vehicle described in the **ROV, SMD Plow (Zeus), ROV REF VEH** section. This can also be viewed as the beginning or 0 point of the tow cable. This offset point is from the towed vehicle's CRP to the tow point.

Depth is an offset from the CRP. It is applied in several different ways:

- 1) If **Use ROV Depth** is set to **Yes** (on the Layback tab) this value is added to the depth from this towed vehicle device and assigned to the vehicle's depth. See Use ROV Depth on the Layback tab above.
- 2) If the Pythagorean solution is selected, this value is added to the vehicle depth and the Tow Point Above Water value to get the vertical portion of the right triangle when computing the layback.
- 3) If the catenary solution is selected, this value is not used in the model.

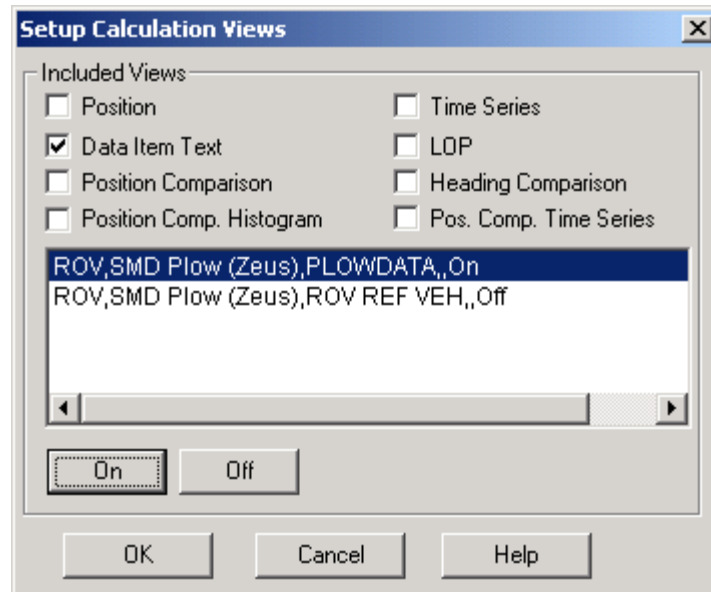
Real-Time Navigation Updates

Most Plow devices have the ability to provide real-time data updates via an umbilical. The Decoded data tab in the I/O Devices window will indicate what data is updated in real-time for each device. You should only select the checkboxes for data output by the device, as leaving these checkboxes selected causes data to be assigned to the vehicle. If the device does not output a particular type of data, 0 will be assigned for each item left selected and this will cause values from other devices to be overwritten.

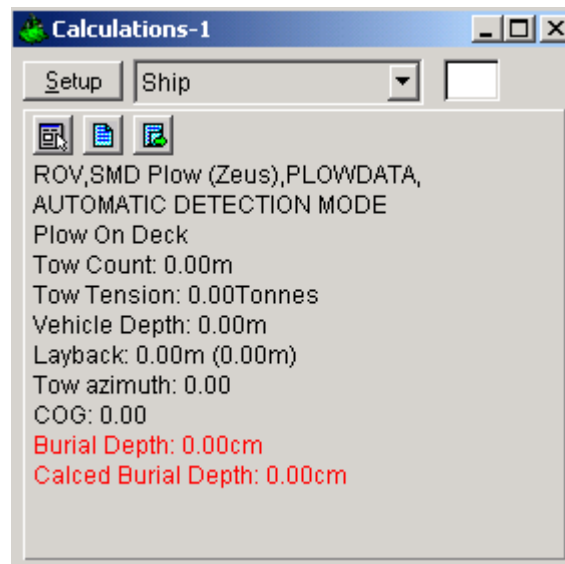
Real-Time Calculations


Calculate Toe Position – this option only applies to the Smart Cutter plow device.

The results of the above configurations are typically viewed in a Calculations window. To display the Calculations window, select View > Calculations from the main menu. Select the appropriate vehicle from the dropdown list and click the Setup button. Select **Data Item Text** and turn the data item **ROV, SMD Plow (Zeus), PLOWDATA** on by highlighting it and clicking the **ON** button as seen below.



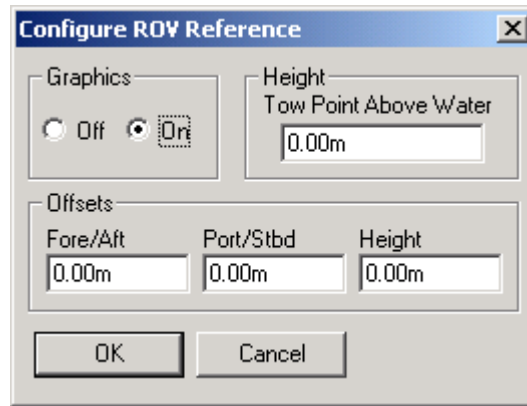
Exit with OK to display the Calculations window as seen below.



From this window, you can monitor some of the input data as well as the layback calculation. This Calculation window also provides a shortcut to the Configure Plow dialog box by clicking the  button.

Data item: ROV, SMD Plow (Zeus), ROV REF VEH

This data item is attached to the vehicle in WinFrog that has a real-time positioning source (DGPS, etc.), typically the ship. This vehicle with its known position serves as the reference point for determining the Plow's position. Highlight this data item and click the Edit button to open the Configure ROV Reference dialog box as seen below.



Graphics:

Select the On radio button to display the device name and a square at the location of the ROV, within the Graphics and Bird's Eye windows.

Tow Point Height:

The height of the tow point above water is added for layback calculations only if a towed vehicle model is used.

Offsets:

The X,Y,Z Offsets are applied from the CRP to the tow point (usually the winch) on the ship. These values are set similar to values that would be applied to any device offset within WinFrog. Note that the Height Offset is not used for operations involving plow vehicles.

Note: It is advised to use the waterline as the vertical CRP reference when sub-sea positioning devices are employed.

TELGRAM SPECIFICATION:

Message 1

Field	Data
1	'V'
2	plow tow force (tons)
3	plow speed (m/hr)
4	burial depth (cm)
5	trip travel (m)

Message 2

Field	Data
1	'D'
2	plow tow force (tons)
3	plow speed (m/hr)
4	burial depth (cm)
5	trip travel (m)
6	plow pitch (deg)
7	plow roll (deg)
8	plow submerged depth (m)
9	ship umbilical tension (kN)
10	port Skid Height (cm)

Message 3

Field	Data
1	'E'
2	stbd Skid height (cm)
3	plow altitude (m)
4	plow steer angle (m)
5	port stabalizer height (cm)
6	stbd stabalizer height (cm)